



Financial Operating System Change

We are changing financial operating systems beginning November 1st. **During the transition, Donor Central and Credit Card Processing will be down until November 10th.** We appreciate your patience with us as we navigate to our new system. We are excited about the new system and all the upgraded capabilities it will provide for us and our donors. We will be sending out an email to all of our fund advisors by the end of October explaining the new Donor Portal.





VIRTUAL CAREER EXPO 2021

Kick Off: October 1

Career Awareness Month • Explore your options

itpcareerexpo.com OR

Download the app



Download on the
App Store

GET IT ON
Google Play

THANK YOU TO OUR SPONSORS

TOYOTA | MS



NORTH MISSISSIPPI
HEALTH SERVICES

CATERPILLAR

MISSISSIPPI STATE
UNIVERSITY

FRANKLIN
CORPORATION

RENASANT
BANK

Ross & Yerger
KNOW THE POSSIBILITIES

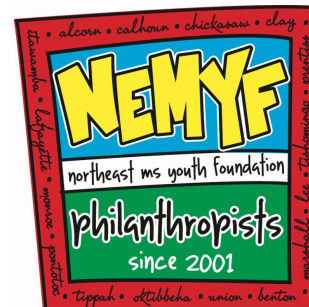


THE UNIVERSITY OF
MISSISSIPPI

BNA
Bank

NEMYF Kick off

The Northeast Mississippi Youth Foundation (NEMYF) is a youth-directed foundation established in 2001 to offer 11th and 12th graders leadership opportunities along with the chance to learn about philanthropy and community involvement. NEMYF participants meet monthly from September through April, and the 2021-2022 cohort is the largest group in the history of NEMYF with **56 students** representing **15** of the **17 counties** the CREATE Foundation serves across **25 schools**. These students participated in their annual retreat on **Sun., Oct. 3** where they learned about their social identity, leadership, and fundraising. They also elected the 21-22SY officers.



NEMYF Student Board 2021-2022



NEMYF Officers 2021-2022



Chair – Mark McCarley, Tishomingo County High School, Tishomingo

Assistant Chair – CJ Shirley, West Union Attendance Center, Union

Secretary – Jake Moore, New Albany High School, Union

Assistant Secretary – Jasmier Coleman, Pontotoc High School, Pontotoc

Treasurer – Gia Vainisi, New Albany High School, Union

Assistant Treasurer – Vishnu Gadepalli, Mississippi School for Math and Science, Lowndes

Historian – Abigail Maddox, Bruce High School, Calhoun

Assistant Historian – Ruth Andrews, Oak Hill Academy, Clay

Congratulations!



David Rumbarger, CDF President/CEO and CREATE board member, received a prestigious leadership award from the International Economic Development Council. The Jeffrey A. Finkle Organizational Leadership Award recognizes an individual who has continuously led the same public or non-profit organization with integrity, tenacity, and philanthropic spirit for at least 15 years. We are so proud of David's well-deserved recognition amongst his peers in economic development! Read more in the press release <https://cdf.ms/david>



**Scan the QR code or visit
www.mscaresgrant.com
to apply**



Questions? Email jason@unitedwaynems.org

The CREATE Foundation, Inc. launched the Community Foundation COVID-19 CARES grant food pantry extension on June 15, 2021. Since this time, 24

applications have been submitted with **18 applications** approved. As of September 17, 2021, the approved applications total **\$364,032.19** in reimbursement funding related to the COVID-19 pandemic for organizations in Alcorn, Chickasaw, Lee, Lowndes, Monroe, Oktibbeha, Prentiss, and Tishomingo counties. The CREATE Foundation, Inc. still has **\$203,007.44** in funding available, so please share about this opportunity with food pantries or other organizations that have feeding programs who may be eligible. Questions about this funding can be directed to Jason Martin at jason@unitedwaynems.org.



Strengthening Charitable Giving in Mississippi

ENDOW Mississippi is a state tax credit program that is an incentive to encourage individuals, businesses and organizations to make lasting investments in their local communities through charitable giving. It was created in 2019 by the State Legislature to encourage gifts to permanent endowments at qualified community foundations, like the CREATE Foundation!

Under this program, donors are eligible to receive a 25% state tax credit for gifts to endowed funds at the CREATE Foundation.

To receive this state tax credit, donors must make a minimum gift of \$1,000 or a maximum gift of \$200,000 to any endowed fund, including community endowed funds. Gifts must be made by October 31st to receive tax credit. According to the latest information that we have, there is \$57,000 of available tax credit which would support a total of \$240,000.

If you have any interest in taking advantage of this program, please contact P.K. Thomas at pk@createfoundation.com or 662-844-8989.



Imagine
the possibilities



"THE SKY IS THE LIMIT..."

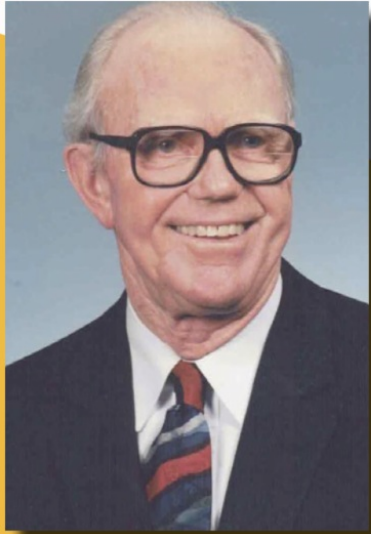
Through the Toyota Wellspring Education Fund, Career Coaches across our region are providing high school students with real-world experiences aligned to their aptitudes and career interests. Jose Quintanilla, a Saltillo High School student, became a private pilot and is enrolled in an industrial maintenance program, pursuing his dream career. When a student has a vision of his or her future, the impact of a mentor, such as a career coach, can propel them to new heights. In Jose's case, the sky's the limit!



To learn more about the Toyota Wellspring Education Fund and the Career Coaches, visit www.createfoundation.com

JOHN ROBERT ARNOLD ENDOWMENT FUND

1923-2017

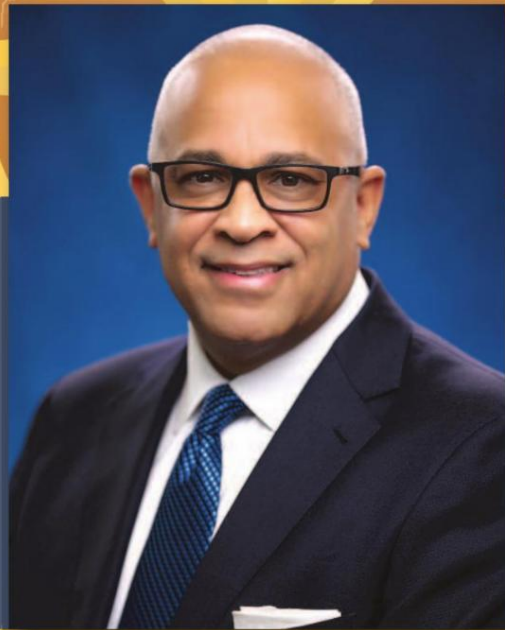


John Robert Arnold was an extraordinary person who had a successful career in agriculture, manufacturing, retail and in the charter bus business. His great success in business was secondary to his faith, love and commitment to family, friends and love of his fellowman. CREATE was honored to partner with John Robert and his family in establishing the John Robert Arnold Endowment Fund to help continue his legacy of service. This fund provides annual support to First United Methodist Church of Starkville, Pushmataha Council of the Boy Scouts, SOAR, Millsaps College, Rust College, Lake Junaluska Methodist Camp, United Way of Oktibbeha County, MSU Symphony, Lake Stephens Methodist Camp, and the Sessums Community Club. He demonstrated his commitment through his leadership and involvement with numerous ministries at First United Methodist Church in Starkville. He was instrumental in establishing the churches' TV, bus and day school ministries as well as teaching generations of 7th grade youth. Mr. Arnold was highly active in a number of community organizations including (SOAR) – Starkville-Oktibbeha Achieving Results, an affiliate of the CREATE Foundation. He was also a big supporter of the Imagine the Possibilities Career Expo, one-year volunteering for four consecutive days.



CREATE

NORTHEAST MISSISSIPPI'S
COMMUNITY FOUNDATION



**Why do you give through
CREATE?**

*"We give to help others
that are less fortunate and
improve the quality of life
in our community."*

KIRK LEWIS

CREATE Board Member

Where Legacies Live Forever

At CREATE, we believe the future of our region is directly tied to enhancing the ability of our people to pursue their goals and aspirations. We encourage you to explore the many ways the CREATE Foundation can help you accomplish your charitable giving.

662-844-8989 | www.createfoundation.com

OUR MISSION

CREATE Foundation is committed to improving the quality of life for the people of Northeast Mississippi through:

- Building permanent community endowment assets
- Encouraging philanthropy and managing charitable funds contributed by individuals, families, organizations and corporations
- Strengthening the regional community development capacity
- Taking a leadership role on key community issues and impacting the region through gifts and targeted grant-making

CREATE Foundation | 662-844-8989 | 662-844-8149 | www.createfoundation.com

